

## SALES REPORT: CATERPILLAR 730 - SN 3T302256 - Year 2022

This Report is a summary about observations came out from technical inspection done by our specialised technician.

### GENERAL CONDITIONS

---

#### MACHINE DATA

---

**Model:** 730

**Family:** ARTICULATED TRUCKS

**Serial Number:** 3T302256

**Order Number MU/MM:** MU00826883

**Construction year:** 2022

**Hour meter:** 6800

**General residual conditions Truck/Tyres:** 40 %

**Machine main application:** Basic application

**Location:** Stock Milano Usato

**Rating:** ★★☆☆☆

**Public price:** Ask

#### MACHINE CONFIGURATION

---

● Machine type Standard - GP ● ● Differential Type Self-Locking ● Transmission type Automatic ● Ride Control ● Tyres type Standard ● General Tyres Residual 40 750/65R25 Yokohama ● Air Conditioning system ● Auto Lube system ● Weight Scale ● Product Link ● Antitheft alarm ● 23900 Kg ● ● CE Mark ● CE Certificate ● Use and maintenance manual ● Registration book & Licence plate undefined

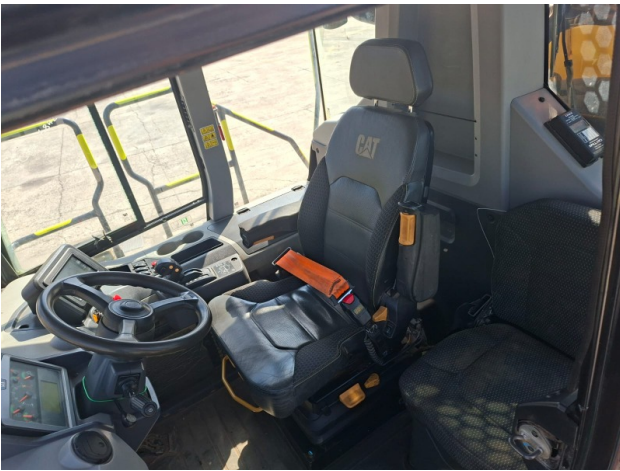
**MACHINE PHOTOS**

---

◆ Hour meter is:

6799





## GENERAL APPEARANCE

◆ Painting Conditions:	Good
◆ Front axle conditions:	Good
◆ Rear axles conditions:	Good
◆ Frame/Bumper conditions:	Good

◆ Door conditions:	Good
◆ Cab/Canopy conditions:	Good
◆ Fender/Mudguard conditions:	Good
◆ Other notes:	Manca logo CAT su radiatore

## TYRES

◆ 1st Axle Tyres residual:	40
◆ Residual percentage	40
◆ 3rd Axle Tyres residual:	40

## Functionality

### Engine & electrical system functionality

◆ MACHINE STATUS DURING CHECK	Tuned on at work
◆ Engine working conditions:	Very good
◆ Engine with oil leaks:	No
◆ Engine presents blowby:	No
◆ Oil-Water presence:	No
◆ Engine present smokiness:	No
◆ Radiator conditions:	Good
◆ Starter motor conditions:	Good

◆ Batteries/Cables conditions: Good

---

◆ Presence of electrical fault: No

---

### Functionality drive and rotation

---

◆ Hydraulic pump conditions: Good

---

◆ Engine travel conditions: Good

---

◆ Final drives conditions: Good

---

◆ Hydraulic joint conditions: Good

Presence of leaks : No

---

◆ Gear switches go/back conditions: Good

---

◆ Brakes conditions: Good

---

### Cabin and Tools

---

◆ Conditions internal cabin: Good

---

◆ Lights & Windshield present issues: Presents and functioning

---

◆ Air conditioning & Filters conditions: Presents and functioning

---

◆ Back & side camera conditions: Present and functioning

---

### Check 81/2008

---

◆ Glass conditions: Excellent - no needs repair

---

◆ Lights conditions: Excellent - no needs repair

---

◆ Mirrors conditions:	Excellent - no reparation needed
◆ Stepladders & handrails conditions:	Excellent
◆ Cameras conditions:	Excellent - no needs repair
◆ Flashing conditions:	Present and functioning
◆ Safety belt conditions:	Present and valid
◆ Controls been modified:	No
◆ Presence of Exclusion Control Lever:	Yes
	If No, are control levers protected to accidental functionality? : Yes
◆ Are Tools Functional & Visible with tag:	Yes
◆ Canopy completed and comes with keys and bolt:	Yes
◆ All Pipes with no damage e/o scratches:	Yes
◆ Batteries box shielded:	Yes
◆ Acoustic alarm works properly:	Yes
◆ Boardwalk presence:	Present and functioning

## Valutazione Macchina

### ★ Non Funzionante (NF)

La macchina si presenta non funzionante e/o in pessime condizioni. Macchina da demolire o venduta per parti di ricambio. La macchina NON è in sicurezza.

### ★★ Scarso (S)

La macchina è in cattivo stato e può presentare visibili rotture e/o crepe su tutta la struttura. Per il suo ottimale funzionamento, o per essere avviata, può necessitare di importanti riparazioni a carro/gomme, perdite d'olio, riverniciatura completa, componenti principali, messa in sicurezza.

### ★★★ Buono (B)

La macchina si presenta in buone condizioni sia estetiche che di funzionamento. Carro/Gomme hanno orientativamente un 30/40% di vita residua. La macchina non presenta importanti rotture e/o perdite d'olio. La macchina è pronta per lavorare "AS IS" anche se potrebbe richiedere piccoli interventi di riparazione/migliorie. La macchina è in sicurezza.

### ★★★★ Molto Buono (O)

La macchina si presenta in condizioni molto buone, non ha più di 5 anni e/o 5000 ore lavorate. Non presenta problemi strutturali e può essere preparata esteticamente per renderla "quasi nuova". Componenti principali non inferiori al 50/60% di vita residua, macchina in sicurezza.

### ★★★★★ Eccellente (E)

La macchina si presenta in condizioni eccellenti, prossime al nuovo. Componenti principali non inferiori al 70/80% di vita residua, macchina in sicurezza.

## Machine Rating

### ★ Not Working (NW)

Machine not operational or in really bad conditions. Machine has to be demolished or sold as a "parts". Machine not in security conditions.

### ★★ Poor (P)

Machine in bad condition, got visible cracks or repairable structural issues. Machine is operational but, in order to work properly, it may need significant repairs to tyres/truck, paint, pins and/or bushings, power train, hydraulic system.

### ★★★ Good (G)

Machine is in good condition and operational, with no structural issues. Tyres/Track around 30/40% of residual life. No relevant hydraulic leaks, pins/bushings with normal wear, frame may need to be repainted. Machine is ready to work "AS IS", it may need minor repairs for a better performance. Machine in security conditions or easy to be in safety condition.

### ★★★★ Very Good (VG)

Machine is in very good conditions, with no more of 5 years and/or 5000 working hours. No structural issues; painting condition is almost perfect. May need an easy check to be sold as "Brand New". Main components with 50/60% of life residue. Machine in security conditions.

### ★★★★★ Excellent (E)

Machine is in excellent condition, comparable to a new one. Main components-with 70/80% of life residue. Machine in security conditions.