

SALES REPORT: HITACHI ZX38U-6#KHITA - SN HCMADC5ZT00052### - Year 2017

This Report is a summary about observations came out from technical inspection done by our specialised technician.

GENERAL CONDITIONS

MACHINE DATA

Model: ZX38U-6#KHITA

Family: MINI EXCAVATOR

Serial Number: HCMADC5ZT00052###

Order Number MU/MM: MU00828037

Construction year: 2017

Hour meter: 2964

General residual conditions Truck/Tyres: 70 %

Machine main application: Basic application

Machine availability date : 13/05/2026

Location: Coming in

Rating: ★★☆☆☆

Public price: Ask

MACHINE CONFIGURATION

● Machine type Standard ● Boom type Mono boom ● Plant features Hammer line ● Quick coupler Mechanic ● Bucket Standard ● Truck type Fixed ● Blade ● General Truck Residual 69% ● Cabin type Fixed standard ● 3960 Kg ● CE Mark ● CE Certificate ● Use and maintenance manual

MACHINE PHOTOS

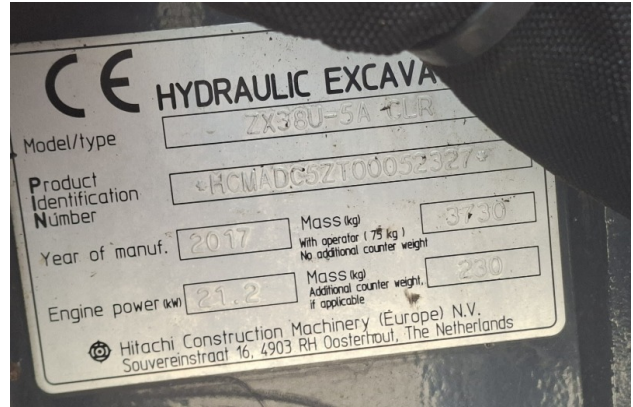
◆ Il contaore è:

Funzionante









GENERAL APPEARANCE

◆ Painting Conditions	Good
<hr/>	
◆ Counterweight conditions:	Good
<hr/>	
◆ Frame/Bumper conditions:	Good

TRUCK

◆ Sprockets residual:	60
<hr/>	
◆ Front idler wheel residual:	60
<hr/>	
◆ Rollers upper/bottom residual:	60
<hr/>	
◆ Chains residual:	100

Right side

◆ Door conditions (right): Good

◆ Spar conditions: Good

Left side

◆ Door conditions (left): Good

◆ Door conditions (left): Good

◆ Spar conditions (left): Good

◆ Hood/Armor bottom conditions: Present and bash

Functionality

Engine & electrical system functionality

◆ In quale stato è stata visionata la macchina: Accesa e provata per ispezione

◆ Engine working conditions: Good

◆ Engine with oil leaks: No

◆ Engine presents blowby: No

◆ Oil-Water presence: No

◆ Engine present smokiness: No

◆ Radiator conditions: Good

◆ Starter motor conditions: Good

◆ Batteries/Cables conditions: Poor

◆ Presence of electrical fault: Si

Functionality drive and rotation

◆ Hydraulic pump conditions: Good

◆ Engine rotation conditions: Good

◆ Engine travel conditions: Good

◆ Final drives conditions: Good

◆ Hydraulic joint conditions: Good

Presence of leaks : No

◆ Hydraulic joint conditions: Good

Presence of leaks : No

Linkage Group

◆ Hydraulic conditions linkage group: No

◆ Boom structure: Good

Presence of welding/cracks : No

◆ Stick structure: Good

Presence of welding/cracks : No

◆ Flexible pipes conditions: Good

◆ Boom cylinders conditions: Good

Leaks : No

◆ Stick cylinder conditions: Good

Leaks : No

◆ Bucket cylinder conditions: Good

Leaks : No

- ◆ Pins & Bushings boom conditions: Good

- ◆ Pins & Bushings stick conditions: Good

- ◆ Pins & Bushings bucket conditions: Poor

- ◆ Bucket & Get conditions: Good

- ◆ Quick Coupler conditions: Not working

- ◆ Auto Lube working conditions: No

Cabin and Tools

- ◆ Conditions internal cabin: Good

- ◆ Flashing presents issues: No

- ◆ Lights & Windshield present issues: Present and not functioning

- ◆ Air conditioning is working: Non Presente

- ◆ Back & side camera conditions: Not functioning

Check 81/2008

- ◆ Glass conditions: Excellent - no needs repair

- ◆ Lights conditions: Broken or Chipped - needs repair

- ◆ Rear view mirrors conditions: Broken or Chipped - needs repair

- ◆ Stepladders & handrails conditions: NA - Not applicable

- ◆ Cameras conditions: Broken or Chipped - needs repair

◆ Flashing conditions:	Not functioning
◆ Safety belt conditions:	Present and expired
◆ Controls been modified:	No
◆ Presence of Exclusion Control Lever:	Yes
◆ Are Tools Functional & Visible with tag:	Yes
◆ Canopy completed and comes with keys and bolt:	Yes
◆ All Pipes with no damage e/o scratches:	Yes
◆ Batteries box shielded:	Yes
◆ Acoustic alarm works properly:	No
◆ Boardwalk presence:	Present and functioning

Valutazione Macchina

★ Non Funzionante (NF)

La macchina si presenta non funzionante e/o in pessime condizioni. Macchina da demolire o venduta per parti di ricambio. La macchina NON è in sicurezza.

★★ Scarso (S)

La macchina è in cattivo stato e può presentare visibili rotture e/o crepe su tutta la struttura. Per il suo ottimale funzionamento, o per essere avviata, può necessitare di importanti riparazioni a carro/gomme, perdite d'olio, riverniciatura completa, componenti principali, messa in sicurezza.

★★★ Buono (B)

La macchina si presenta in buone condizioni sia estetiche che di funzionamento. Carro/Gomme hanno orientativamente un 30/40% di vita residua. La macchina non presenta importanti rotture e/o perdite d'olio. La macchina è pronta per lavorare "AS IS" anche se potrebbe richiedere piccoli interventi di riparazione/migliorie. La macchina è in sicurezza.

★★★★ Molto Buono (O)

La macchina si presenta in condizioni molto buone, non ha più di 5 anni e/o 5000 ore lavorate. Non presenta problemi strutturali e può essere preparata esteticamente per renderla "quasi nuova". Componenti principali non inferiori al 50/60% di vita residua, macchina in sicurezza.

★★★★★ Eccellente (E)

La macchina si presenta in condizioni eccellenti, prossime al nuovo. Componenti principali non inferiori al 70/80% di vita residua, macchina in sicurezza.

Machine Rating

★ Not Working (NW)

Machine not operational or in really bad conditions. Machine has to be demolished or sold as a "parts". Machine not in security conditions.

★★ Poor (P)

Machine in bad condition, got visible cracks or repairable structural issues. Machine is operational but, in order to work properly, it may need significant repairs to tyres/truck, paint, pins and/or bushings, power train, hydraulic system.

★★★ Good (G)

Machine is in good condition and operational, with no structural issues. Tyres/Track around 30/40% of residual life. No relevant hydraulic leaks, pins/bushings with normal wear, frame may need to be repainted. Machine is ready to work "AS IS", it may need minor repairs for a better performance. Machine in security conditions or easy to be in safety condition.

★★★★ Very Good (VG)

Machine is in very good conditions, with no more of 5 years and/or 5000 working hours. No structural issues; painting condition is almost perfect. May need an easy check to be sold as "Brand New". Main components with 50/60% of life residue. Machine in security conditions.

★★★★★ Excellent (E)

Machine is in excellent condition, comparable to a new one. Main components-with 70/80% of life residue. Machine in security conditions.