

SALES REPORT: HYUNDAI HSL650#KHYUN - SN HHKHS802CG0001### - Year 2016

This Report is a summary about observations came out from technical inspection done by our specialised technician.

GENERAL CONDITIONS

MACHINE DATA

Model: HSL650#KHYUN

Family: SKID STEER LOADER

Serial Number: HHKHS802CG0001###

Order Number MU/MM: MU00828038

Construction year: 2016

Hour meter: 677

General residual conditions Truck/Tyres: 80 %

Machine main application: Basic application

Machine availability date : 13/05/2026

Location: Coming in

Rating: ★★☆☆☆

Public price: Ask

MACHINE CONFIGURATION

- Machine type Wasting configuration
- Rops Open
- Bucket Standard
- Plant features
- General Truck Residual 80%
- 2690 Kg
- CE Mark
- CE Certificate
- undefined

MACHINE PHOTOS

◆ Il contaore e':

Funzionante







GENERAL APPEARANCE

◆ Painting Conditions	Good
◆ Counterweight conditions	Good
	Needs painting? : No
◆ Frame/Bumper conditions	Good
◆ Door conditions (left)	NA - Not applicable

Truck

◆ Front Idler residual	50
◆ Front drive sprocket residual:	50

Functionality

Engine & electrical system functionality

◆ In quale stato è stata visionata la macchina:	Accesa e provata per ispezione
---	--------------------------------

- ◆ Engine working conditions: Good

- ◆ Engine with oil leaks: No

- ◆ Engine presents blowby: No

- ◆ Oil-Water presence: No

- ◆ Engine present smokiness: No

- ◆ Radiator conditions: Good

- ◆ Starter motor conditions: Good

- ◆ Batteries/Cables conditions: Good

- ◆ Presence of electrical fault: Si

Functionality drive and rotation

- ◆ Hydraulic pump conditions: Good

- ◆ Brakes and steering cluthces conditions: Good

- ◆ Engine travel conditions: Good

- ◆ Final drives conditions: Good

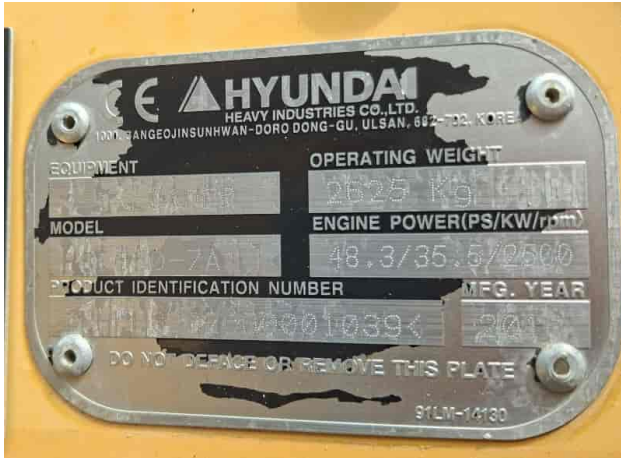
Linkage Group

- ◆ Tenuta idraulica braccio (il braccio cala): No

- ◆ Boom structure: Good

Photos

Presence of welding/cracks : No



- ◆ Flexible pipes conditions: Good

- ◆ Pins & Bushings boom conditions: Good

- ◆ Pins & Bushings stick conditions: Good

- ◆ Pins & Bushings bucket conditions: Good

- ◆ Bucket/Get conditions Good

- ◆ Funzionamento Impianto Ingrassaggio Automatico: No

Cabin and Tools

- ◆ Conditions internal cabin: Good

- ◆ Lights & Windshield present issues_ Present and not functioning

- ◆ Air conditioning & Filters conditions: Not functioning

- ◆ Back & side camera conditions: Not functioning

Check 81/2008

- ◆ Glasses conditions: Excellent - no needs repair

◆ Lights conditions:	Excellent - no needs repair
◆ Condizioni specchietti:	Eccellente - non necessita riparazione
◆ Stepladders & handrails conditions:	NA - Not applicable
◆ Cameras conditions:	Non presente
◆ Flashing conditions:	Not functioning
◆ Safety belt conditions:	Present and valid
◆ Controls been modified:	No
◆ Presence of Exclusion Control Lever:	Yes
◆ Are Tools Functional & Visible with tag:	Yes
◆ Canopy completed and comes with keys and bolt:	Yes
◆ All Pipes with no damage e/o scratches:	Yes
◆ Batteries box shielded:	Yes
◆ Acoustic alarm works properly:	No
◆ Boardwalk presence:	Present and functioning

Valutazione Macchina

★ Non Funzionante (NF)

La macchina si presenta non funzionante e/o in pessime condizioni. Macchina da demolire o venduta per parti di ricambio. La macchina NON è in sicurezza.

★★ Scarso (S)

La macchina è in cattivo stato e può presentare visibili rotture e/o crepe su tutta la struttura. Per il suo ottimale funzionamento, o per essere avviata, può necessitare di importanti riparazioni a carro/gomme, perdite d'olio, riverniciatura completa, componenti principali, messa in sicurezza.

★★★ Buono (B)

La macchina si presenta in buone condizioni sia estetiche che di funzionamento. Carro/Gomme hanno orientativamente un 30/40% di vita residua. La macchina non presenta importanti rotture e/o perdite d'olio. La macchina è pronta per lavorare "AS IS" anche se potrebbe richiedere piccoli interventi di riparazione/migliorie. La macchina è in sicurezza.

★★★★ Molto Buono (O)

La macchina si presenta in condizioni molto buone, non ha più di 5 anni e/o 5000 ore lavorate. Non presenta problemi strutturali e può essere preparata esteticamente per renderla "quasi nuova". Componenti principali non inferiori al 50/60% di vita residua, macchina in sicurezza.

★★★★★ Eccellente (E)

La macchina si presenta in condizioni eccellenti, prossime al nuovo. Componenti principali non inferiori al 70/80% di vita residua, macchina in sicurezza.

Machine Rating

★ Not Working (NW)

Machine not operational or in really bad conditions. Machine has to be demolished or sold as a "parts". Machine not in security conditions.

★★ Poor (P)

Machine in bad condition, got visible cracks or repairable structural issues. Machine is operational but, in order to work properly, it may need significant repairs to tyres/truck, paint, pins and/or bushings, power train, hydraulic system.

★★★ Good (G)

Machine is in good condition and operational, with no structural issues. Tyres/Track around 30/40% of residual life. No relevant hydraulic leaks, pins/bushings with normal wear, frame may need to be repainted. Machine is ready to work "AS IS", it may need minor repairs for a better performance. Machine in security conditions or easy to be in safety condition.

★★★★ Very Good (VG)

Machine is in very good conditions, with no more of 5 years and/or 5000 working hours. No structural issues; painting condition is almost perfect. May need an easy check to be sold as "Brand New". Main components with 50/60% of life residue. Machine in security conditions.

★★★★★ Excellent (E)

Machine is in excellent condition, comparable to a new one. Main components-with 70/80% of life residue. Machine in security conditions.