

## SALES REPORT: CATERPILLAR 963D - SN LCS02### - Year 2013

This Report is a summary about observations came out from technical inspection done by our specialised technician.

### GENERAL CONDITIONS

---

### MACHINE DATA

---

**Model:** 963D

**Family:** LARGE TRACK LOADER

**Serial Number:** LCS02###

**Order Number MU/MM:** MU00828751

**Construction year:** 2013

**Hour meter:** 10429

**General residual conditions Truck/Tyres:** 30 %

**Machine main application:** Basic application

**Machine availability date :** 01/07/2026

**Location:** Coming in

**Rating:** ★★☆☆☆

**Public price:** Ask

### MACHINE CONFIGURATION

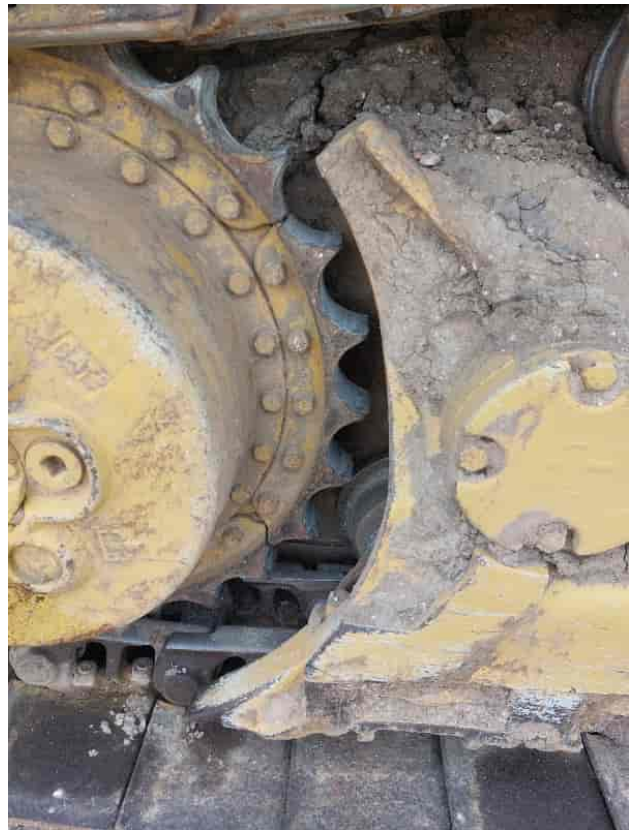
---

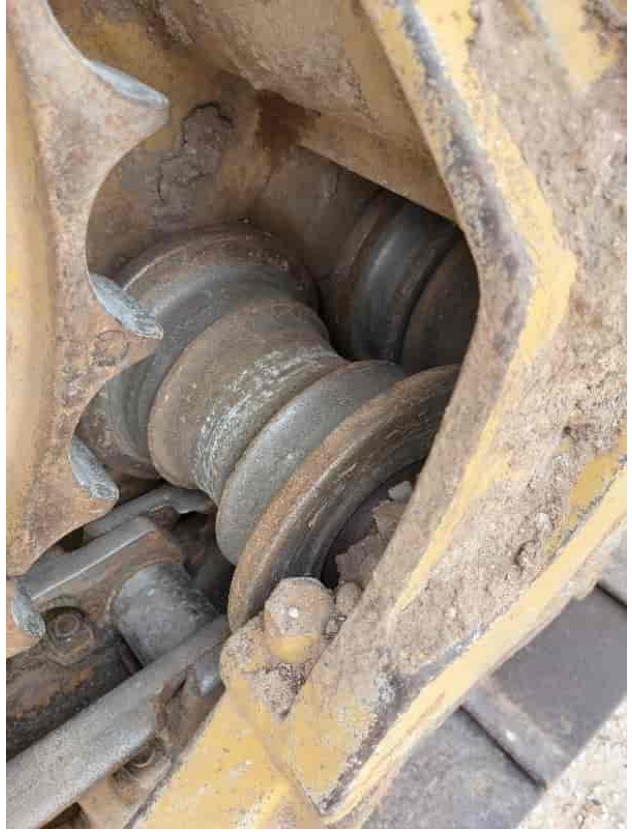
● Machine type Standard - GP ● Rops Close ● Bucket Standard Benna larg 2500 mm Get Get Get Cleat Std con denti ● Ripper ● General Truck Residual 30% ● Air Conditioning system ● Auto lube system ● Product Link ● 20695 Kg ● CE Mark ● CE Certificate ● Use and maintenance manual RIPPER -3 DENTI ● AVAILABLE FROM JULY

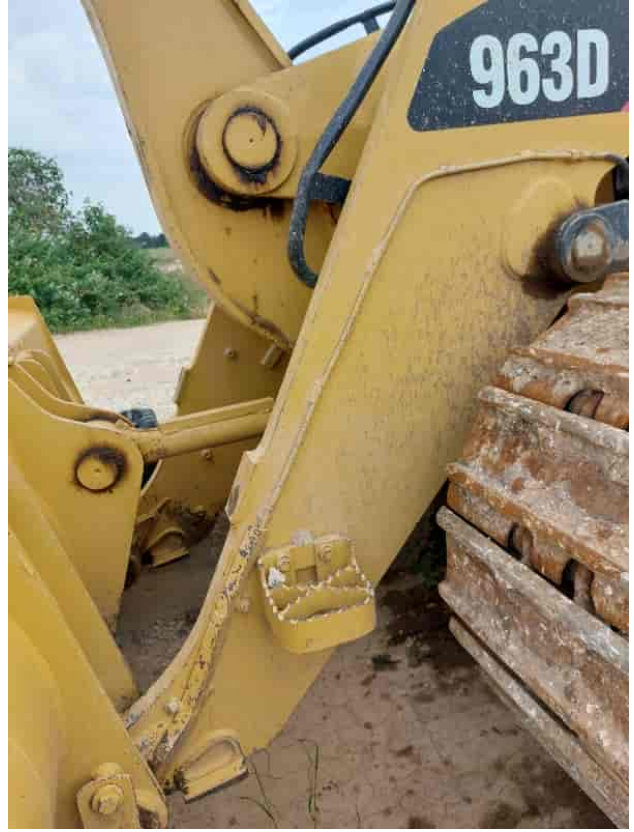
**MACHINE PHOTOS**

---













**GENERAL APPEARANCE**

◆ Painting Conditions	Good
◆ Counterweight conditions	Good
	Needs painting? : No
◆ Frame/Bumper conditions	Good
◆ Door conditions (left)	Good
◆ Other notes	Vari punti di ruggine

**Truck**

◆ N/D	30
◆ N/D	20

◆ N/D	30
◆ N/D	30
◆ N/D	30
◆ N/D	30

**Functionality**

---

**Engine & electrical system functionality**

---

◆ N/D	Accesa e provata per ispezione
◆ N/D	Good
◆ N/D	No
	If Yes, where : Trasudi
◆ N/D	No
◆ N/D	No
◆ N/D	No
◆ N/D	Good
◆ N/D	Good
◆ N/D	Good
◆ N/D	No

**Functionality drive and rotation**

---

◆ N/D	Good
-------	------

◆ N/D		Good
◆ N/D		Poor
◆ N/D		Good
◆ N/D	Da revisionare i motori di traino Nostro preventivo di ricambi circa 4800	

### Linkage Group

◆ N/D		No
◆ N/D		Good
		Presence of welding/cracks : No
◆ N/D		Good
◆ N/D		Good
◆ N/D		Good
◆ N/D		Good
◆ N/D		Good
◆ N/D		Si
◆ N/D	Lieve gioco attacco benna Nella norma	

### Cabin and Tools

◆ Conditions internal cabin:		Good
◆ Lights & Windshield present issues_		Presents and functioning
◆ Air conditioning & Filters conditions:		Presents and functioning

---

◆ Back & side camera conditions: Present and not functioning

---

**Check 81/2008**

---

◆ Glasses conditions: Excellent - no needs repair

---

◆ Lights conditions: Broken or Chipped - needs repair

---

◆ Condizioni specchietti: Rotto o Scheggiato - necessita riparazione

---

◆ Stepladders & handrails conditions: Good

---

◆ Cameras conditions: Broken or Chipped - needs repair

---

◆ Flashing conditions: Not functioning

---

◆ Safety belt conditions: Present and valid

---

◆ Controls been modified: No

---

◆ Presence of Exclusion Control Lever: Yes

---

If No, are control levers protected to accidental functionality? : Yes

---

◆ Are Tools Functional & Visible with tag: Yes

---

◆ Canopy completed and comes with keys and bolt: Yes

---

◆ All Pipes with no damage e/o scratches: Yes

---

◆ Batteries box shielded: Yes

---

◆ Acoustic alarm works properly: Yes

---

◆ Boardwalk presence: Present and bashee

---

## Valutazione Macchina

### ★ Non Funzionante (NF)

La macchina si presenta non funzionante e/o in pessime condizioni. Macchina da demolire o venduta per parti di ricambio. La macchina NON è in sicurezza.

### ★★ Scarso (S)

La macchina è in cattivo stato e può presentare visibili rotture e/o crepe su tutta la struttura. Per il suo ottimale funzionamento, o per essere avviata, può necessitare di importanti riparazioni a carro/gomme, perdite d'olio, riverniciatura completa, componenti principali, messa in sicurezza.

### ★★★ Buono (B)

La macchina si presenta in buone condizioni sia estetiche che di funzionamento. Carro/Gomme hanno orientativamente un 30/40% di vita residua. La macchina non presenta importanti rotture e/o perdite d'olio. La macchina è pronta per lavorare "AS IS" anche se potrebbe richiedere piccoli interventi di riparazione/migliorie. La macchina è in sicurezza.

### ★★★★ Molto Buono (O)

La macchina si presenta in condizioni molto buone, non ha più di 5 anni e/o 5000 ore lavorate. Non presenta problemi strutturali e può essere preparata esteticamente per renderla "quasi nuova". Componenti principali non inferiori al 50/60% di vita residua, macchina in sicurezza.

### ★★★★★ Eccellente (E)

La macchina si presenta in condizioni eccellenti, prossime al nuovo. Componenti principali non inferiori al 70/80% di vita residua, macchina in sicurezza.

## Machine Rating

### ★ Not Working (NW)

Machine not operational or in really bad conditions. Machine has to be demolished or sold as a "parts". Machine not in security conditions.

### ★★ Poor (P)

Machine in bad condition, got visible cracks or repairable structural issues. Machine is operational but, in order to work properly, it may need significant repairs to tyres/truck, paint, pins and/or bushings, power train, hydraulic system.

### ★★★ Good (G)

Machine is in good condition and operational, with no structural issues. Tyres/Track around 30/40% of residual life. No relevant hydraulic leaks, pins/bushings with normal wear, frame may need to be repainted. Machine is ready to work "AS IS", it may need minor repairs for a better performance. Machine in security conditions or easy to be in safety condition.

### ★★★★ Very Good (VG)

Machine is in very good conditions, with no more of 5 years and/or 5000 working hours. No structural issues; painting condition is almost perfect. May need an easy check to be sold as "Brand New". Main components with 50/60% of life residue. Machine in security conditions.

### ★★★★★ Excellent (E)

Machine is in excellent condition, comparable to a new one. Main components-with 70/80% of life residue. Machine in security conditions.