

SALES REPORT: BITELLI SF200L#KBITC - SN 960### - Year 1996

This Report is a summary about observations came out from technical inspection done by our specialised technician.

GENERAL CONDITIONS

MACHINE DATA

Model: SF200L#KBITC

Family: COLD PLANER

Serial Number: 960###

Order Number MU/MM: MU00829161

Construction year: 1996

Hour meter: 3575

General residual conditions Truck/Tyres: %

Machine main application:

Machine availability date : 27/05/2026

Location: Coming in

Rating: ★☆☆☆☆

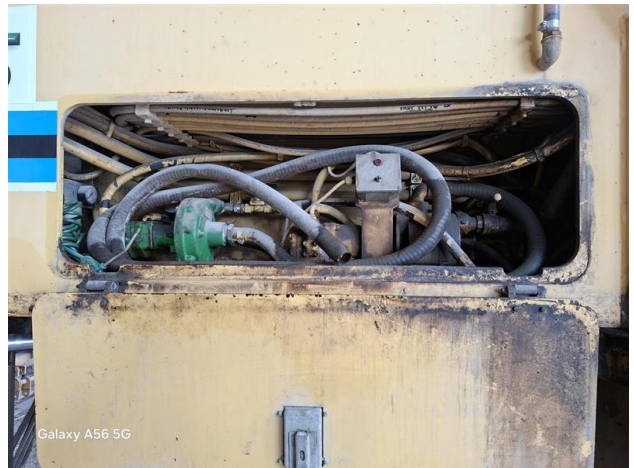
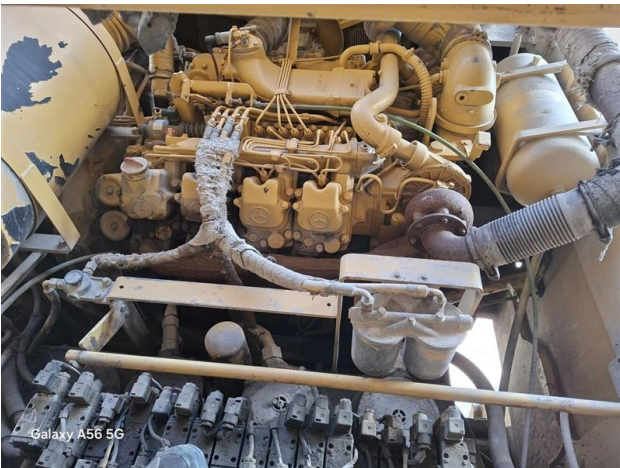
Public price: 57.000 €

MACHINE CONFIGURATION

● Machine type Standard ● Plant features ● Truck type 29 ● Product Link 29 ● EPA Tag 25 ● 24 ● 29000 Kg ● CE Mark ● CE Certificate ● Use and maintenance manual

MACHINE PHOTOS







Galaxy A56 5G



Galaxy A56 5G



Galaxy A56 5G



Galaxy A56 5G



GENERAL APPEARANCE

- ◆ Painting Conditions Good

- ◆ Spar conditions: Good

Functionality

Engine & electrical system functionality

- ◆ In quale stato è stata visionata la macchina: Accesa e provata per ispezione

- ◆ Engine working conditions: Good

- ◆ Engine with oil leaks: Yes

If Yes, where : tubazioni varie sotto motore+ tenute cilindri di sterzo

- ◆ Engine presents blowby: No

- ◆ Engine present smokiness: No

- ◆ Radiator conditions: Good

- ◆ Starter motor conditions: Good

- ◆ Batteries/Cables conditions: Good

- ◆ Presence of electrical fault: No

Functionality drive and rotation

- ◆ Hydraulic pump conditions: Good

- ◆ Engine travel conditions: Good

- ◆ Final drives conditions: Good

- ◆ Hydraulic joint conditions: Good

- ◆ Door conditions (left): Poor

- ◆ Door conditions (left): Poor

Inserire Misura (mm.) : 199

Linkage Group

- ◆ Boom structure: Poor

Presenza di perdite? Se si, specificare da dove: : tubi vari

- ◆ Stick structure: Poor

Presenza di perdite? Se si, specificare da dove: : si cilindri di sterzo

- ◆ Flexible pipes conditions: Good

Presenza di perdite? Se si, specificare da dove: : si ant. sx

◆ Boom cylinders conditions: NA - Not applicable

Check 81/2008

◆ Lights conditions: Excellent - no needs repair

◆ Condizioni specchietti: Rotto o Scheggiato - necessita riparazione

◆ Stepladders & handrails conditions: Good

◆ Cameras conditions: Broken or Chipped - needs repair

◆ Flashing conditions: Not functioning

◆ Controls been modified: No

◆ Presence of Exclusion Control Lever: Yes

If No, are control levers protected to accidental functionality? : Yes

◆ Are Tools Functional & Visible with tag: Yes

◆ Canopy completed and comes with keys and bolt: Yes

◆ All Pipes with no damage e/o scratches: No

◆ Batteries box shielded: Yes

◆ Acoustic alarm works properly: No

◆ Boardwalk presence: Present and functioning

Valutazione Macchina

★ Non Funzionante (NF)

La macchina si presenta non funzionante e/o in pessime condizioni. Macchina da demolire o venduta per parti di ricambio. La macchina NON è in sicurezza.

★★ Scarso (S)

La macchina è in cattivo stato e può presentare visibili rotture e/o crepe su tutta la struttura. Per il suo ottimale funzionamento, o per essere avviata, può necessitare di importanti riparazioni a carro/gomme, perdite d'olio, riverniciatura completa, componenti principali, messa in sicurezza.

★★★ Buono (B)

La macchina si presenta in buone condizioni sia estetiche che di funzionamento. Carro/Gomme hanno orientativamente un 30/40% di vita residua. La macchina non presenta importanti rotture e/o perdite d'olio. La macchina è pronta per lavorare "AS IS" anche se potrebbe richiedere piccoli interventi di riparazione/migliorie. La macchina è in sicurezza.

★★★★ Molto Buono (O)

La macchina si presenta in condizioni molto buone, non ha più di 5 anni e/o 5000 ore lavorate. Non presenta problemi strutturali e può essere preparata esteticamente per renderla "quasi nuova". Componenti principali non inferiori al 50/60% di vita residua, macchina in sicurezza.

★★★★★ Eccellente (E)

La macchina si presenta in condizioni eccellenti, prossime al nuovo. Componenti principali non inferiori al 70/80% di vita residua, macchina in sicurezza.

Machine Rating

★ Not Working (NW)

Machine not operational or in really bad conditions. Machine has to be demolished or sold as a "parts". Machine not in security conditions.

★★ Poor (P)

Machine in bad condition, got visible cracks or repairable structural issues. Machine is operational but, in order to work properly, it may need significant repairs to tyres/truck, paint, pins and/or bushings, power train, hydraulic system.

★★★ Good (G)

Machine is in good condition and operational, with no structural issues. Tyres/Track around 30/40% of residual life. No relevant hydraulic leaks, pins/bushings with normal wear, frame may need to be repainted. Machine is ready to work "AS IS", it may need minor repairs for a better performance. Machine in security conditions or easy to be in safety condition.

★★★★ Very Good (VG)

Machine is in very good conditions, with no more of 5 years and/or 5000 working hours. No structural issues; painting condition is almost perfect. May need an easy check to be sold as "Brand New". Main components with 50/60% of life residue. Machine in security conditions.

★★★★★ Excellent (E)

Machine is in excellent condition, comparable to a new one. Main components-with 70/80% of life residue. Machine in security conditions.