

SALES REPORT: CATERPILLAR MH3026 - SN FB900#### - Year 2018

This Report is a summary about observations came out from technical inspection done by our specialised technician.

GENERAL CONDITIONS

MACHINE DATA

Model: MH3026

Family: WHEEL EXCAVATOR

Serial Number: FB900####

Order Number MU/MM: MU00829241

Construction year: 2018

Hour meter: 22998

General residual conditions Truck/Tyres: 5 %

Machine main application: Landfill

Machine availability date : 01/09/2026

Location: Coming in

Rating: ★☆☆☆☆

Public price: Ask

MACHINE CONFIGURATION

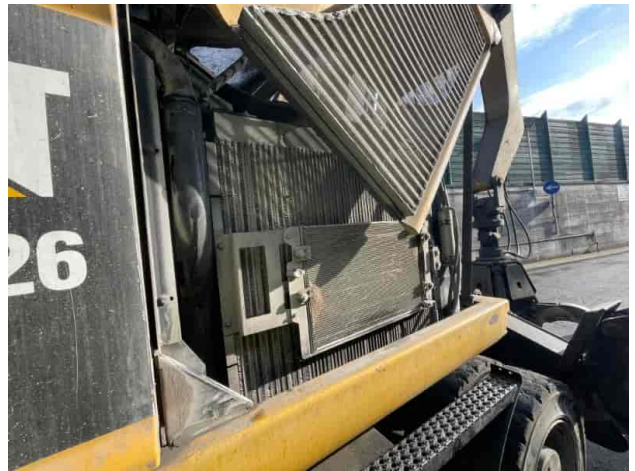
● Machine type Material Handling MH ● Boom type Mono boom ● Boom check valves ● Stick check valves ● Plant features Versatility ● Tyres type Twin Wheel ● General Tyres Residual 5 10.00-20 Globe Star NO POLIPO; lama con deformazioni; Con segni ed usure varie; ● Blade ● Stabilizers 4 Stabilizers ● Cabin type Hydraulic lift ● Cabin fog Front superiore ● Air Conditioning system Operation Yes ● Auto lube system Operation Yes ● Product Link ● CE Mark ● CE Certificate ● Use and maintenance manual ● Registration book & Licence plate No Registration book & Licence plate ● AVAILABLE FROM JUNE

MACHINE PHOTOS

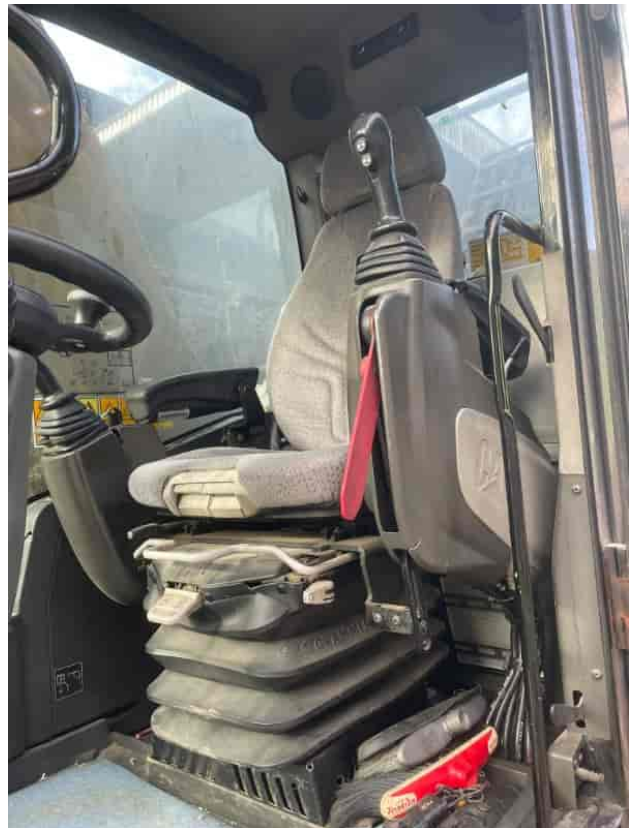
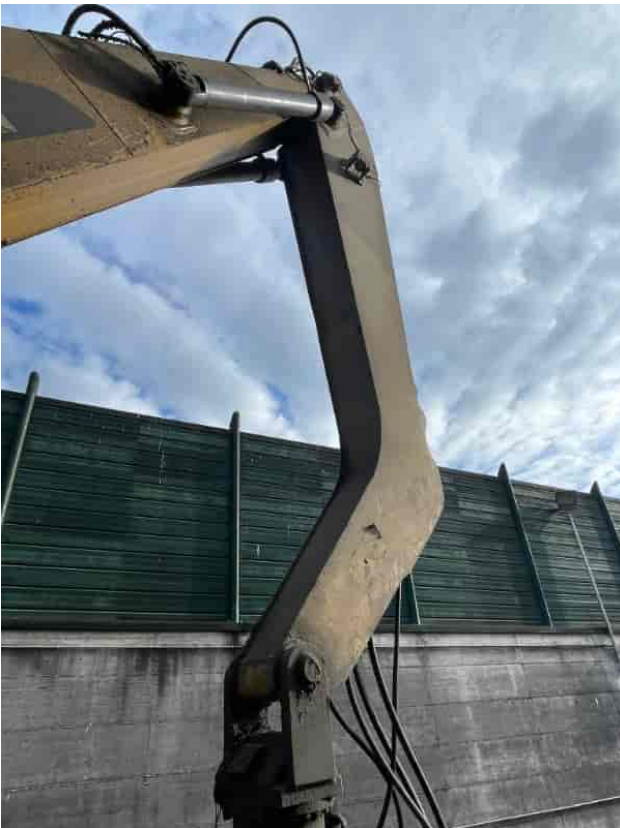
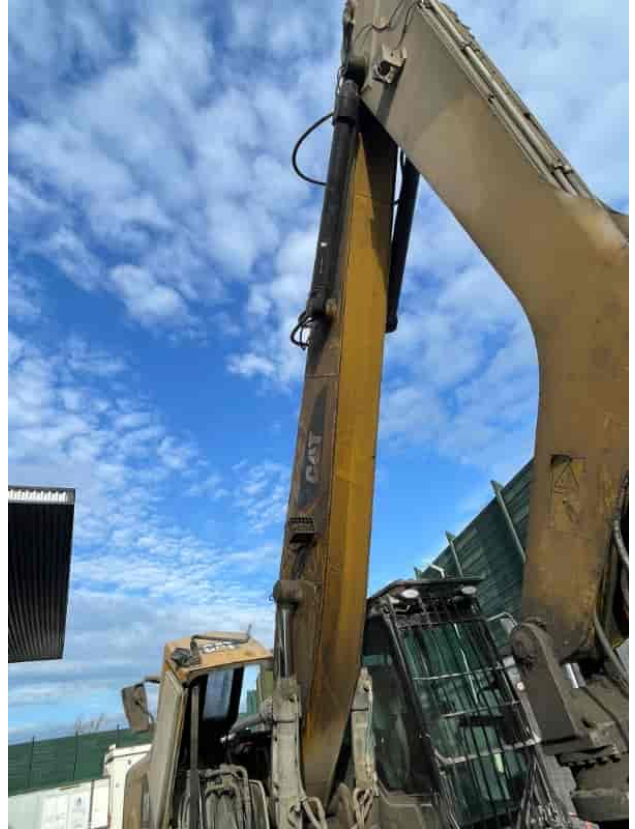
◆ Il contaore e':

Funzionante



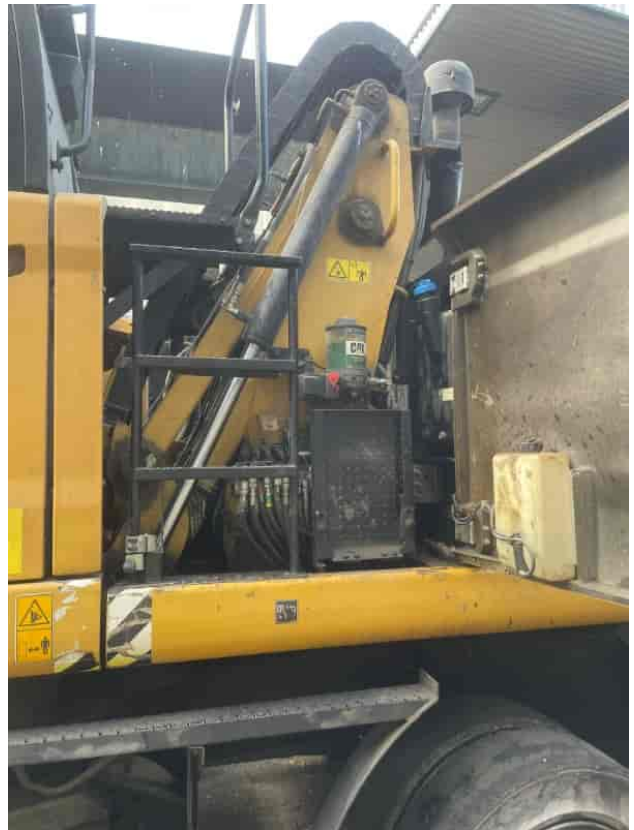














GENERAL APPEARANCE

◆ Painting Conditions	Poor
◆ Counterweight conditions	Poor
	Needs painting? : Yes
◆ Frame / Bumper conditions	Poor

Tyres

◆ N/D	5
◆ N/D	5

Right side

◆ N/D	Poor
-------	------

◆ N/D		Poor
-------	--	------

◆ N/D	segni, strusciature, ammaccature.	
-------	-----------------------------------	--

Left side

◆ N/D		Poor
-------	--	------

◆ N/D		Poor
-------	--	------

◆ N/D		Poor
-------	--	------

◆ N/D	segni, strusciature, ammaccature, crinature.	
-------	--	--

◆ Hood / Armor bottom conditions		Present and bash
----------------------------------	--	------------------

Functionality

Engine & electrical system functionality

◆ N/D		Spenta e ferma
-------	--	----------------

◆ N/D		Not working
-------	--	-------------

◆ N/D		Yes
-------	--	-----

If Yes, where : trasudi

◆ N/D		No
-------	--	----

◆ N/D		No
-------	--	----

◆ N/D		No
-------	--	----

◆ N/D		Good
-------	--	------

◆ N/D		Good
-------	--	------

◆ N/D Good

◆ N/D No

◆ N/D
Motore da revisionare e marmitta da sostituire; accumulatore pilota scarico da sostituire; da controllare gli accumulatori freni e cilindri di sollevamento;

Functionality drive and rotation

◆ N/D Good

◆ N/D Good

◆ N/D Good

◆ N/D Good

◆ N/D Good

Presence of leaks : No

◆ N/D Good

Presence of leaks : No

◆ N/D No

Linkage Group

◆ N/D Yes

◆ N/D Good

Photos

Presence of welding/cracks : Yes



◆ N/D

Photos

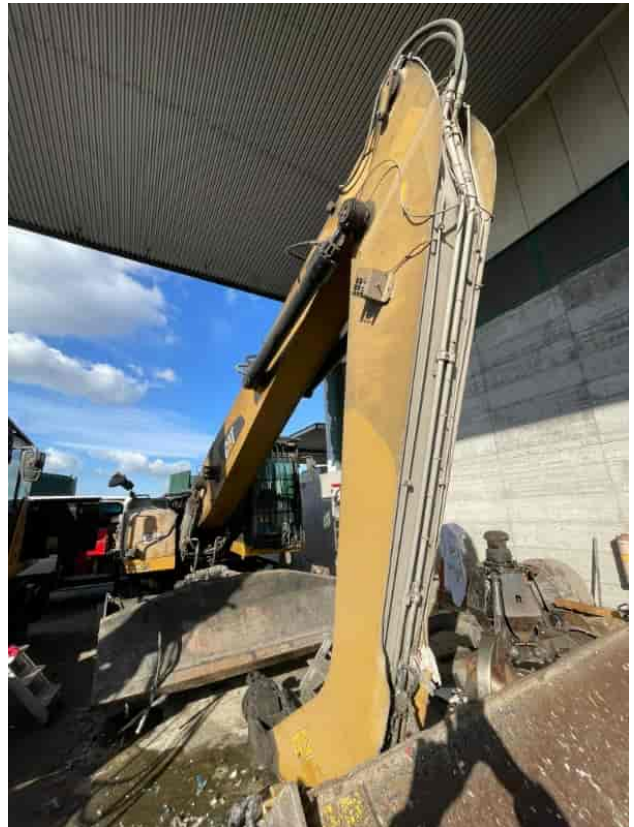
Poor

Presence of welding/cracks : No



◆ N/D

Poor



◆ N/D	Poor
	Leaks : No
◆ N/D	Good
	Leaks : No
◆ N/D	Poor
	Leaks : Yes
◆ N/D	Good
◆ N/D	Good
◆ N/D	NA - Not applicable
◆ N/D	NA - Not applicable
◆ N/D	NA - Not applicable
◆ N/D	Si
◆ N/D	NO POLIPO; Rinforzo su Boom su indicazione CAT; Giochi compatibili con le ore;

Cabin and Tools

◆ Conditions internal cabin	Poor
Other notes : Sistema di pesatura Vei; copri pulsanti manipolatori rovinati usurati; alcune modanature rovinate crinate;	
◆ Flashing presents issues	No
◆ Lights & Windshield present issues	Presents and functioning
◆ Air contidioning & Filters conditions	Presents and functioning
◆ Back & side camera conditions	Present and functioning

◆ Condizioni freni:	Scarso
<hr/>	
◆ Condizioni freno di Stazionamento:	Buono
<hr/>	
◆ Glass conditions	Excellent - no needs repair
<hr/>	
◆ Lights conditions	Broken or Chipped - needs repair
<hr/>	
◆ Rear view mirrors conditions	Broken or Chipped - needs repair
<hr/>	
◆ Stepladders & handrails conditions	Poor
<hr/>	
◆ Cameras conditions	Excellent - no needs repair
<hr/>	
◆ Flashing conditions	Present and not functioning
<hr/>	
◆ Safety belt conditions	Present and valid
<hr/>	
◆ Controls been modified	No
<hr/>	
◆ Presence of Exclusion Control Lever	Yes
<hr/>	
◆ Are Tools Functional & Visible with tag	Yes
<hr/>	
◆ Canopy completed and comes with keys and bolt	Yes
<hr/>	
◆ All Pipes with no damage e/o scratches	No
<hr/>	
◆ Batteries box shielded	Yes
<hr/>	
◆ Acoustic alarm works properly	Yes
<hr/>	
◆ Boardwalk presence	Present and functioning
<hr/>	
◆ Annotazioni su Freni funzionanti: accumulatore pilota scarico da sostituire; da controllare gli accumulatori freni e cilindri di sollevamento;	

Valutazione Macchina

★ Non Funzionante (NF)

La macchina si presenta non funzionante e/o in pessime condizioni. Macchina da demolire o venduta per parti di ricambio. La macchina NON è in sicurezza.

★★ Scarso (S)

La macchina è in cattivo stato e può presentare visibili rotture e/o crepe su tutta la struttura. Per il suo ottimale funzionamento, o per essere avviata, può necessitare di importanti riparazioni a carro/gomme, perdite d'olio, riverniciatura completa, componenti principali, messa in sicurezza.

★★★ Buono (B)

La macchina si presenta in buone condizioni sia estetiche che di funzionamento. Carro/Gomme hanno orientativamente un 30/40% di vita residua. La macchina non presenta importanti rotture e/o perdite d'olio. La macchina è pronta per lavorare "AS IS" anche se potrebbe richiedere piccoli interventi di riparazione/migliorie. La macchina è in sicurezza.

★★★★ Molto Buono (O)

La macchina si presenta in condizioni molto buone, non ha più di 5 anni e/o 5000 ore lavorate. Non presenta problemi strutturali e può essere preparata esteticamente per renderla "quasi nuova". Componenti principali non inferiori al 50/60% di vita residua, macchina in sicurezza.

★★★★★ Eccellente (E)

La macchina si presenta in condizioni eccellenti, prossime al nuovo. Componenti principali non inferiori al 70/80% di vita residua, macchina in sicurezza.

Machine Rating

★ Not Working (NW)

Machine not operational or in really bad conditions. Machine has to be demolished or sold as a "parts". Machine not in security conditions.

★★ Poor (P)

Machine in bad condition, got visible cracks or repairable structural issues. Machine is operational but, in order to work properly, it may need significant repairs to tyres/truck, paint, pins and/or bushings, power train, hydraulic system.

★★★ Good (G)

Machine is in good condition and operational, with no structural issues. Tyres/Track around 30/40% of residual life. No relevant hydraulic leaks, pins/bushings with normal wear, frame may need to be repainted. Machine is ready to work "AS IS", it may need minor repairs for a better performance. Machine in security conditions or easy to be in safety condition.

★★★★ Very Good (VG)

Machine is in very good conditions, with no more of 5 years and/or 5000 working hours. No structural issues; painting condition is almost perfect. May need an easy check to be sold as "Brand New". Main components with 50/60% of life residue. Machine in security conditions.

★★★★★ Excellent (E)

Machine is in excellent condition, comparable to a new one. Main components-with 70/80% of life residue. Machine in security conditions.