

## SALES REPORT: CATERPILLAR 315C - SN ANF00### - Year 2005

This Report is a summary about observations came out from technical inspection done by our specialised technician.

### GENERAL CONDITIONS

---

### MACHINE DATA

---

**Model:** 315C

**Family:** SMALL EXCAVATOR

**Serial Number:** ANF00###

**Order Number MU/MM:** MU00830440

**Construction year:** 2005

**Hour meter:** 6341

**General residual conditions Truck/Tyres:** 39 %

**Machine main application:** Basic application

**Machine availability date :** 27/05/2026

**Location:** Coming in

**Rating:** ★★☆☆☆

**Public price:** 45.000 €

### MACHINE CONFIGURATION

---

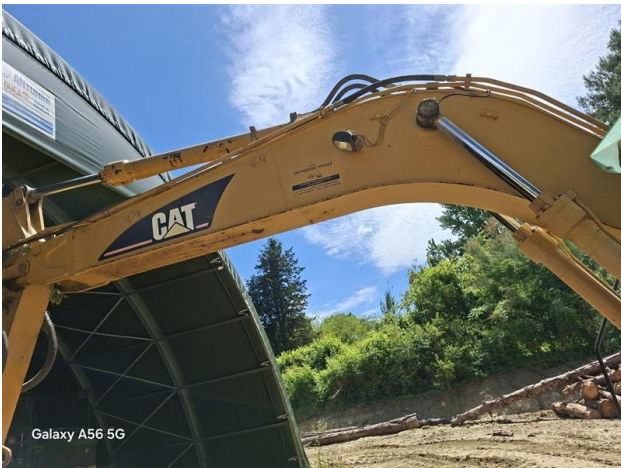
● Machine type Standard ● Boom type Mono boom ● Boom check valves ● Stick check valves ● Plant features Hammer/Crusher line ● Quick coupler Mechanic vtn ● Bucket Standard 130cm Get Teeth 1 ● Truck type Fixed ● General Truck Residual 39% ● Cabin type Fixed standard ● Air Conditioning system ● 17450 Kg ● CE Mark ● CE Certificate ● Use and maintenance manual

## MACHINE PHOTOS

◆ Il contaore è:

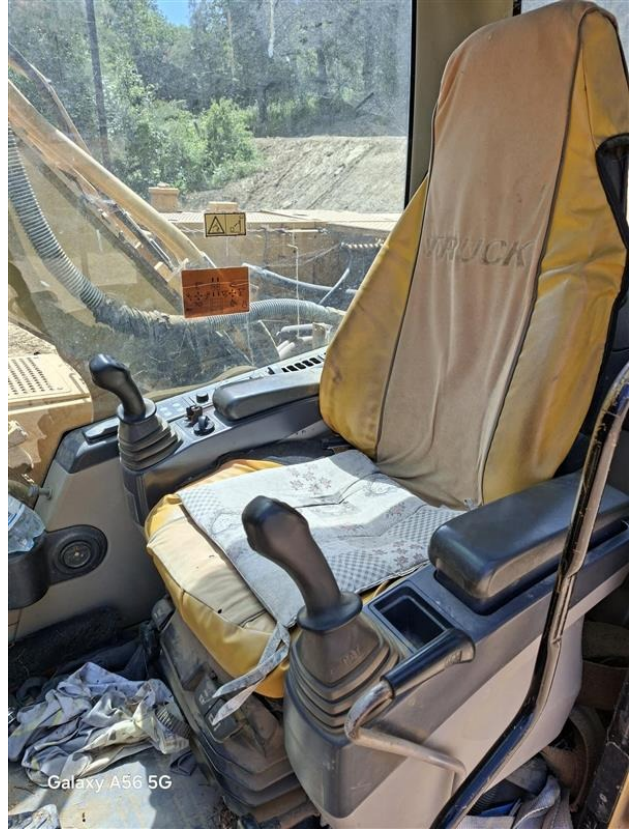
Funzionante







Galaxy A56 5G



Galaxy A56 5G



Galaxy A56 5G



Galaxy A56 5G



**GENERAL APPEARANCE**

---

◆ Painting Conditions	Good
<hr/>	
◆ Counterweight conditions:	Good
<hr/>	
◆ Frame/Bumper conditions:	Good
<hr/>	

**TRUCK**

---

◆ N/D	38
<hr/>	
◆ N/D	40
<hr/>	
◆ N/D	39
<hr/>	
◆ N/D	39
<hr/>	

**Right side**

---

◆ N/D Good

---

◆ N/D Good

---

**Left side**

---

◆ N/D Good

---

◆ N/D Good

---

◆ N/D Good

---

◆ Hood/Armor bottom conditions: Present and bash

---

**Functionality**

---

**Engine & electrical system functionality**

---

◆ N/D Accesa e provata per ispezione

---

◆ N/D Good

---

◆ N/D No

---

◆ N/D No

---

◆ N/D No

---

◆ N/D No

---

◆ N/D Good

---

◆ N/D Good

---

◆ N/D Good

---

◆ N/D No

**Functionality drive and rotation**

---

◆ N/D Good

---

◆ N/D Good

---

◆ N/D Good

---

◆ N/D Good

---

◆ N/D Good

Presence of leaks : No

---

◆ N/D Good

Presence of leaks : No

**Linkage Group**

---

◆ N/D No

---

◆ N/D Good

Presence of welding/cracks : No

---

◆ N/D Good

Presence of welding/cracks : No

---

◆ N/D Good

---

◆ N/D Good

Leaks : No

---

◆ N/D Good

Leaks : No

◆ N/D	Good
	Leaks : No
◆ N/D	Good
◆ N/D	Good
◆ N/D	Good
◆ N/D	Good
◆ N/D	Good
◆ N/D	No

### Cabin and Tools

◆ Conditions internal cabin:	Good
	Other notes : seggiolino con fodera
◆ Flashing presents issues:	No
◆ Lights & Windshield present issues:	Presents and functioning
◆ Air conditioning is working:	Presente e funzionante
◆ Back & side camera conditions:	Not functioning

### Check 81/2008

◆ Glass conditions:	Excellent - no needs repair
◆ Lights conditions:	Broken or Chipped - needs repair
◆ Rear view mirrors conditions:	Mancanti
◆ Stepladders & handrails conditions:	Good

---

◆ Cameras conditions:	Broken or Chipped - needs repair
◆ Flashing conditions:	Not functioning
◆ Safety belt conditions:	Present and expired
◆ Controls been modified:	No
◆ Presence of Exclusion Control Lever:	Yes
◆ Are Tools Functional & Visible with tag:	Yes
◆ Canopy completed and comes with keys and bolt:	Yes
◆ All Pipes with no damage e/o scratches:	No
◆ Batteries box shielded:	Yes
◆ Acoustic alarm works properly:	No
◆ Boardwalk presence:	Present and bashee

---

## Valutazione Macchina

### ★ Non Funzionante (NF)

La macchina si presenta non funzionante e/o in pessime condizioni. Macchina da demolire o venduta per parti di ricambio. La macchina NON è in sicurezza.

### ★★ Scarso (S)

La macchina è in cattivo stato e può presentare visibili rotture e/o crepe su tutta la struttura. Per il suo ottimale funzionamento, o per essere avviata, può necessitare di importanti riparazioni a carro/gomme, perdite d'olio, riverniciatura completa, componenti principali, messa in sicurezza.

### ★★★ Buono (B)

La macchina si presenta in buone condizioni sia estetiche che di funzionamento. Carro/Gomme hanno orientativamente un 30/40% di vita residua. La macchina non presenta importanti rotture e/o perdite d'olio. La macchina è pronta per lavorare "AS IS" anche se potrebbe richiedere piccoli interventi di riparazione/migliorie. La macchina è in sicurezza.

### ★★★★ Molto Buono (O)

La macchina si presenta in condizioni molto buone, non ha più di 5 anni e/o 5000 ore lavorate. Non presenta problemi strutturali e può essere preparata esteticamente per renderla "quasi nuova". Componenti principali non inferiori al 50/60% di vita residua, macchina in sicurezza.

### ★★★★★ Eccellente (E)

La macchina si presenta in condizioni eccellenti, prossime al nuovo. Componenti principali non inferiori al 70/80% di vita residua, macchina in sicurezza.

## Machine Rating

### ★ Not Working (NW)

Machine not operational or in really bad conditions. Machine has to be demolished or sold as a "parts". Machine not in security conditions.

### ★★ Poor (P)

Machine in bad condition, got visible cracks or repairable structural issues. Machine is operational but, in order to work properly, it may need significant repairs to tyres/truck, paint, pins and/or bushings, power train, hydraulic system.

### ★★★ Good (G)

Machine is in good condition and operational, with no structural issues. Tyres/Track around 30/40% of residual life. No relevant hydraulic leaks, pins/bushings with normal wear, frame may need to be repainted. Machine is ready to work "AS IS", it may need minor repairs for a better performance. Machine in security conditions or easy to be in safety condition.

### ★★★★ Very Good (VG)

Machine is in very good conditions, with no more of 5 years and/or 5000 working hours. No structural issues; painting condition is almost perfect. May need an easy check to be sold as "Brand New". Main components with 50/60% of life residue. Machine in security conditions.

### ★★★★★ Excellent (E)

Machine is in excellent condition, comparable to a new one. Main components-with 70/80% of life residue. Machine in security conditions.