

SALES REPORT: CATERPILLAR 315C - SN ANF00### - Year 2006

This Report is a summary about observations comes out from technical inspection done by our specialised technician.

GENERAL CONDITIONS

MACHINE DATA

Model: 315C

Family: SMALL EXCAVATOR

Serial Number: ANF00###

Order Number MU/MM: MU00830442

Construction year: 2006

Hour meter: 9485

General residual conditions Truck/Tyres: 35 %

Machine main application: Basic application

Machine availability date : 27/05/2026

Location: Coming in

Rating: ★★☆☆☆

Public price: 37.000 €

MACHINE CONFIGURATION

• Machine type Standard • Boom type Mono boom • Boom check valves • Stick check valves • Plant features Versatility • Quick coupler Hydraulic marca non riconosciuta • Bucket Standard 130cm Get Teeth 1 • Truck type Fixed • General Truck Residual 35% • Cabin type Fixed standard • Air Conditioning system • 17450 Kg • CE Mark • CE Certificate • Use and maintenance manual

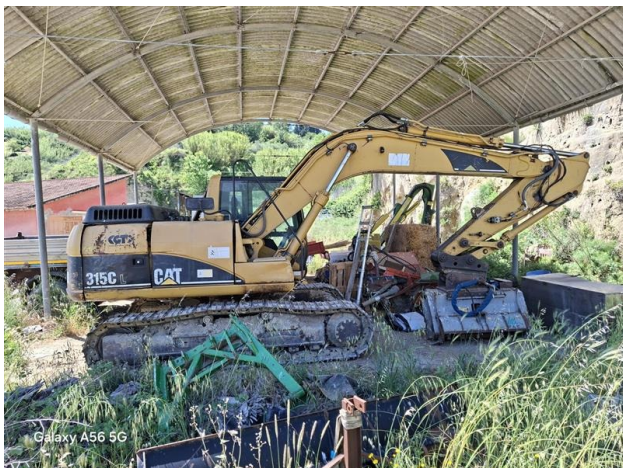
MACHINE PHOTOS

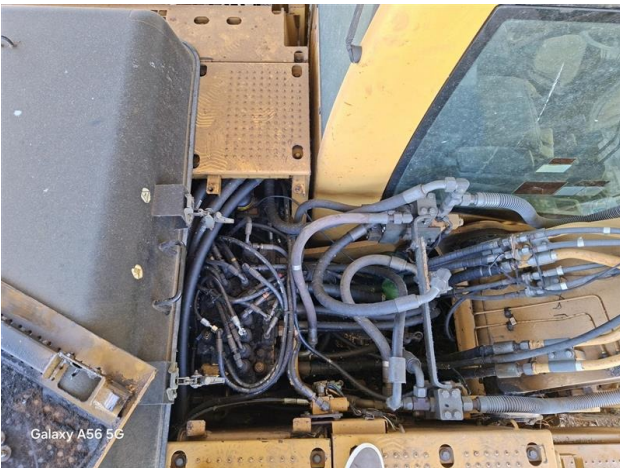
◆ Il contaore è:

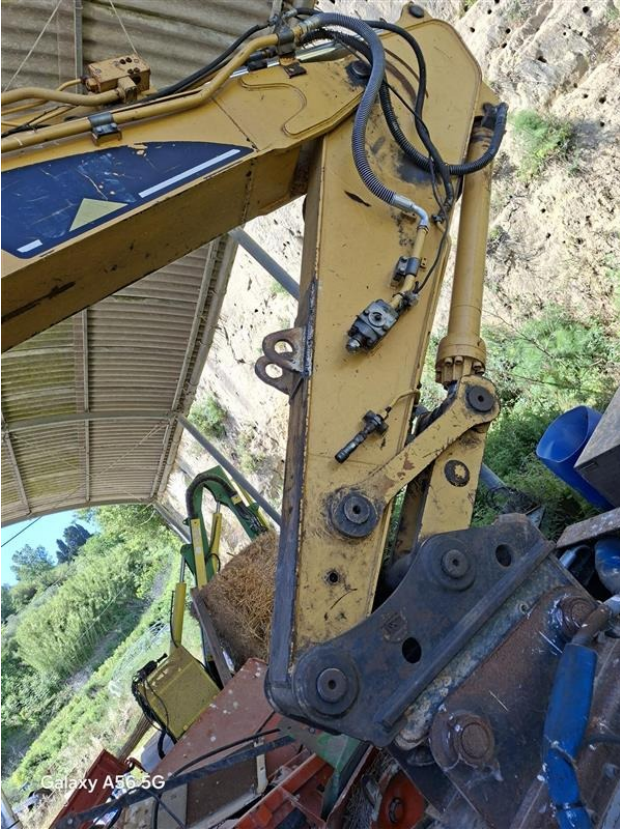
Funzionante

◆ Annotazioni sul:

trincia come in foto non compreso, solo benna







GENERAL APPEARANCE

| | |
|-----------------------------|------|
| ◆ Painting Conditions | Poor |
| ◆ Counterweight conditions: | Good |
| ◆ Frame/Bumper conditions: | Poor |

TRUCK

| | |
|-------|----|
| ◆ N/D | 35 |
| ◆ N/D | 34 |
| ◆ N/D | 35 |
| ◆ N/D | 34 |

Right side

- ◆ N/D Good

- ◆ N/D Good

Left side

- ◆ N/D Good

- ◆ N/D Good

- ◆ N/D Good

- ◆ Hood/Armor bottom conditions: Present and bash

Functionality

Engine & electrical system functionality

- ◆ N/D Accesa e provata per ispezione

- ◆ N/D Good

- ◆ N/D Yes
If Yes, where : da tutte le tubazioni idrauliche e lato pompe

- ◆ N/D No

- ◆ N/D No

- ◆ N/D No

- ◆ N/D Good

◆ N/D Good

◆ N/D Good

◆ N/D No

Functionality drive and rotation

◆ N/D Good

◆ N/D Good

◆ N/D Good

◆ N/D Good

◆ N/D Good

Presence of leaks : No

◆ N/D Good

Presence of leaks : Yes

Linkage Group

◆ N/D No

◆ N/D Good

Presence of welding/cracks : No

◆ N/D Good

Presence of welding/cracks : No

◆ N/D Poor

◆ N/D Good

Leaks : No

◆ N/D Good

Leaks : No

◆ N/D Good

Leaks : No

◆ N/D Good

◆ N/D Good

◆ N/D Good

◆ N/D Good

◆ N/D Good

◆ N/D No

Cabin and Tools

◆ Conditions internal cabin: Good

Other notes : sedile con fodera consumata

◆ Flashing presents issues: No

◆ Lights & Windshield present issues: Not presents

◆ Air conditioning is working: Presente e funzionante

◆ Back & side camera conditions: Not functioning

Check 81/2008

◆ Glass conditions: Broken or Chipped - needs repair

◆ Lights conditions: Broken or Chipped - needs repair

◆ Rear view mirrors conditions: Mancanti

| | |
|--|----------------------------------|
| ◆ Stepladders & handrails conditions: | Poor |
| ◆ Cameras conditions: | Broken or Chipped - needs repair |
| ◆ Flashing conditions: | Not functioning |
| ◆ Safety belt conditions: | Present and expired |
| ◆ Controls been modified: | No |
| ◆ Presence of Exclusion Control Lever: | Yes |
| ◆ Are Tools Functional & Visible with tag: | Yes |
| ◆ Canopy completed and comes with keys and bolt: | Yes |
| ◆ All Pipes with no damage e/o scratches: | No |
| ◆ Batteries box shielded: | Yes |
| ◆ Acoustic alarm works properly: | No |
| ◆ Boardwalk presence: | Present and bashee |

Valutazione Macchina

★ Non Funzionante (NF)

La macchina si presenta non funzionante e/o in pessime condizioni. Macchina da demolire o venduta per parti di ricambio. La macchina NON è in sicurezza.

★★ Scarso (S)

La macchina è in cattivo stato e può presentare visibili rotture e/o crepe su tutta la struttura. Per il suo ottimale funzionamento, o per essere avviata, può necessitare di importanti riparazioni a carro/gomme, perdite d'olio, riverniciatura completa, componenti principali, messa in sicurezza.

★★★ Buono (B)

La macchina si presenta in buone condizioni sia estetiche che di funzionamento. Carro/Gomme hanno orientativamente un 30/40% di vita residua. La macchina non presenta importanti rotture e/o perdite d'olio. La macchina è pronta per lavorare "AS IS" anche se potrebbe richiedere piccoli interventi di riparazione/migliorie. La macchina è in sicurezza.

★★★★ Molto Buono (O)

La macchina si presenta in condizioni molto buone, non ha più di 5 anni e/o 5000 ore lavorate. Non presenta problemi strutturali e può essere preparata esteticamente per renderla "quasi nuova". Componenti principali non inferiori al 50/60% di vita residua, macchina in sicurezza.

★★★★★ Eccellente (E)

La macchina si presenta in condizioni eccellenti, prossime al nuovo. Componenti principali non inferiori al 70/80% di vita residua, macchina in sicurezza.

Machine Rating

★ Not Working (NW)

Machine not operational or in really bad conditions. Machine has to be demolished or sold as a "parts". Machine not in security conditions.

★★ Poor (P)

Machine in bad condition, got visible cracks or repairable structural issues. Machine is operational but, in order to work properly, it may need significant repairs to tyres/truck, paint, pins and/or bushings, power train, hydraulic system.

★★★ Good (G)

Machine is in good condition and operational, with no structural issues. Tyres/Track around 30/40% of residual life. No relevant hydraulic leaks, pins/bushings with normal wear, frame may need to be repainted. Machine is ready to work "AS IS", it may need minor repairs for a better performance. Machine in security conditions or easy to be in safety condition.

★★★★ Very Good (VG)

Machine is in very good conditions, with no more of 5 years and/or 5000 working hours. No structural issues; painting condition is almost perfect. May need an easy check to be sold as "Brand New". Main components with 50/60% of life residue. Machine in security conditions.

★★★★★ Excellent (E)

Machine is in excellent condition, comparable to a new one. Main components-with 70/80% of life residue. Machine in security conditions.