

SALES REPORT: CATERPILLAR 950M - SN XCJ20259 - Year 2020

This Report is a summary about observations came out from technical inspection done by our specialised technician.

GENERAL CONDITIONS

MACHINE DATA

Model: 950M

Family: MEDIUM WHEEL LOADER

Serial Number: XCJ20259

Order Number MU/MM: MU00831419

Construction year: 2020

Hour meter: 1412

General residual conditions Truck/Tyres: 50 %

Machine main application: Basic application

Location: Stock Genova

Rating: ★★★★★☆

Public price: Ask

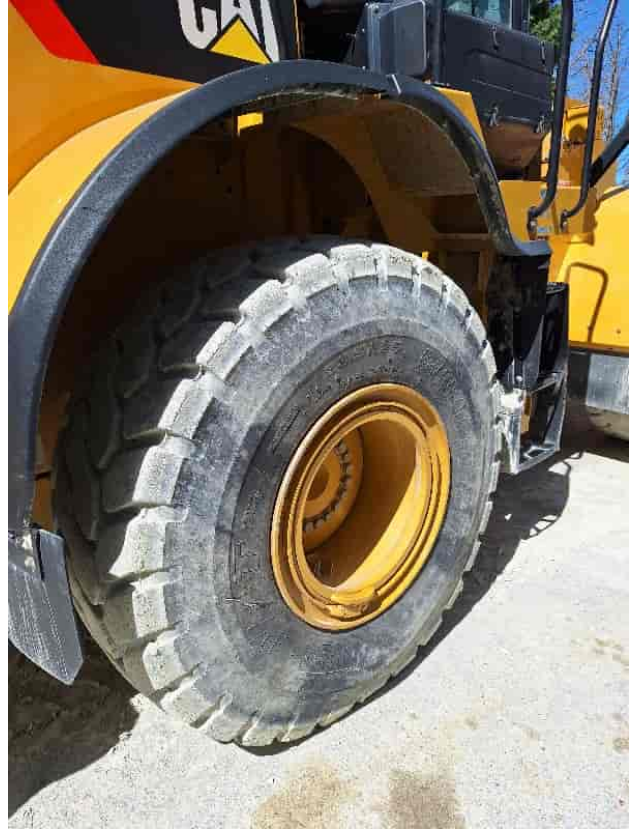
MACHINE CONFIGURATION

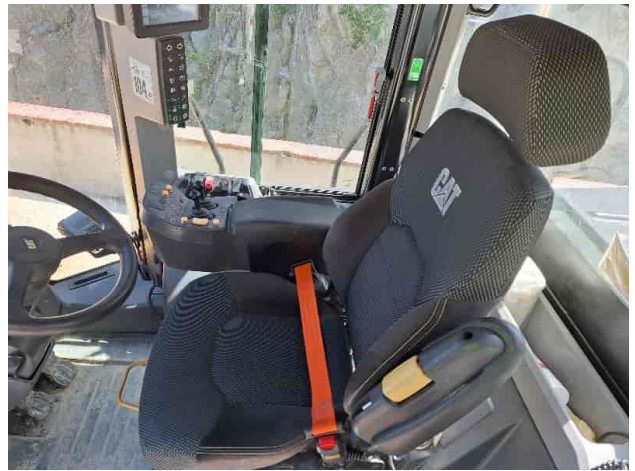
- Machine type Standard - GP
- Steering type Command steering Presence of Command Steering No
- Differential Type Self-Locking
- Transmission type Automatic
- Ride Control
- Bucket Standard 3.3 mc Get Teeth
- Tyres type Standard
- General Tyres Residual 50 23.5R25 Bridgestone
- Rops Close
- Air Conditioning system
- Auto Lube system
- Weight Scale
- Product Link
- 192000 Kg
- CE Mark
- CE Certificate
- EPA Tag
- Use and maintenance manual
- Registration book & Licence plate Registration book & Licence plate ALE267

MACHINE PHOTOS











GENERAL APPEARANCE

◆ Painting Conditions:	Very Good
◆ Counterweight conditions:	Very good
	Needs painting? : No
◆ Frame/Bumper conditions:	Very Good
◆ Door conditions:	Excellent

◆ Central joint: Excellent

◆ Fender/Mudguard conditions: Excellent

Tyres

◆ N/D 50

◆ N/D 50

Functionality

Engine & electrical system functionality

◆ N/D Accesa e provata per ispezione

◆ N/D Very good

◆ N/D No

◆ N/D No

◆ N/D No

◆ N/D No

◆ N/D Excellent

◆ N/D Very good

◆ N/D Very good

◆ N/D No

Functionality drive and rotation

◆ N/D	Excellent
◆ N/D	NA - Not applicable
◆ N/D	Very good
◆ N/D	Very good
	Presence of leaks : No
◆ N/D	Very Good

Engine & electrical system functionality

◆ N/D	Very good
◆ N/D	Very good
◆ N/D	Very good

Linkage Group

◆ N/D	No
◆ N/D	Very good
	Presence of welding/cracks : No
◆ N/D	Very good
◆ N/D	Excellent
◆ N/D	NA - Not applicable
◆ N/D	Very good

◆ N/D Very good

◆ N/D NA - Not applicable

◆ N/D Si

Cabin and Tools

◆ Conditions internal cabin: Excellent

◆ Lights & Windshield present issues: Presents and functioning

◆ Air conditioning & Filters conditions: Presents and functioning

◆ Back & side camera conditions: Present and functioning

Check 81/2008

◆ Condizioni freni: Eccellente

◆ Condizioni freno di Stazionamento: Eccellente

◆ Glass conditions: Excellent - no needs repair

◆ Lights conditions: Excellent - no needs repair

◆ Condizioni specchietti: Eccellente - non necessita riparazione

◆ Stepladders & handrails conditions: Excellent

◆ Cameras conditions: Excellent - no needs repair

◆ Flashing conditions: Present and functioning

◆ Safety belt conditions: Present and valid

◆ Controls been modified:	No
◆ Presence of Exclusion Control Lever:	Yes
◆ Are Tools Functional & Visible with tag:	Yes
◆ Canopy completed and comes with keys and bolt:	Yes
◆ All Pipes with no damage e/o scratches:	Yes
◆ Batteries box shielded:	Yes
◆ Acoustic alarm works properly:	Yes
◆ Boardwalk presence:	Present and functioning

Valutazione Macchina

★ Non Funzionante (NF)

La macchina si presenta non funzionante e/o in pessime condizioni. Macchina da demolire o venduta per parti di ricambio. La macchina NON è in sicurezza.

★★ Scarso (S)

La macchina è in cattivo stato e può presentare visibili rotture e/o crepe su tutta la struttura. Per il suo ottimale funzionamento, o per essere avviata, può necessitare di importanti riparazioni a carro/gomme, perdite d'olio, riverniciatura completa, componenti principali, messa in sicurezza.

★★★ Buono (B)

La macchina si presenta in buone condizioni sia estetiche che di funzionamento. Carro/Gomme hanno orientativamente un 30/40% di vita residua. La macchina non presenta importanti rotture e/o perdite d'olio. La macchina è pronta per lavorare "AS IS" anche se potrebbe richiedere piccoli interventi di riparazione/migliorie. La macchina è in sicurezza.

★★★★ Molto Buono (O)

La macchina si presenta in condizioni molto buone, non ha più di 5 anni e/o 5000 ore lavorate. Non presenta problemi strutturali e può essere preparata esteticamente per renderla "quasi nuova". Componenti principali non inferiori al 50/60% di vita residua, macchina in sicurezza.

★★★★★ Eccellente (E)

La macchina si presenta in condizioni eccellenti, prossime al nuovo. Componenti principali non inferiori al 70/80% di vita residua, macchina in sicurezza.

Machine Rating

★ Not Working (NW)

Machine not operational or in really bad conditions. Machine has to be demolished or sold as a "parts". Machine not in security conditions.

★★ Poor (P)

Machine in bad condition, got visible cracks or repairable structural issues. Machine is operational but, in order to work properly, it may need significant repairs to tyres/truck, paint, pins and/or bushings, power train, hydraulic system.

★★★ Good (G)

Machine is in good condition and operational, with no structural issues. Tyres/Track around 30/40% of residual life. No relevant hydraulic leaks, pins/bushings with normal wear, frame may need to be repainted. Machine is ready to work "AS IS", it may need minor repairs for a better performance. Machine in security conditions or easy to be in safety condition.

★★★★ Very Good (VG)

Machine is in very good conditions, with no more of 5 years and/or 5000 working hours. No structural issues; painting condition is almost perfect. May need an easy check to be sold as "Brand New". Main components with 50/60% of life residue. Machine in security conditions.

★★★★★ Excellent (E)

Machine is in excellent condition, comparable to a new one. Main components-with 70/80% of life residue. Machine in security conditions.